



**KENTUCKY  
BLUEGRASS**  
CHAPTER



**2025  
STRATEGIC PARTNERSHIP  
PROGRAM**

 [info@kbcmpi.org](mailto:info@kbcmpi.org)

 [www.kbcmpi.org](http://www.kbcmpi.org)

 [@mpikbc](https://www.instagram.com/mpikbc)

# Why MPI Kentucky Bluegrass Chapter?

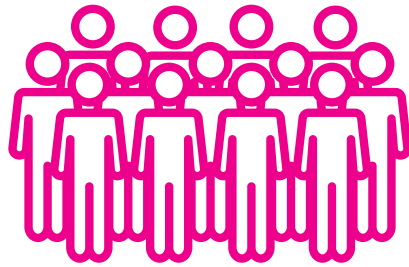
Membership Data as of September 2024

OVERALL EXCELLENCE



2023 CHAPTER AWARD

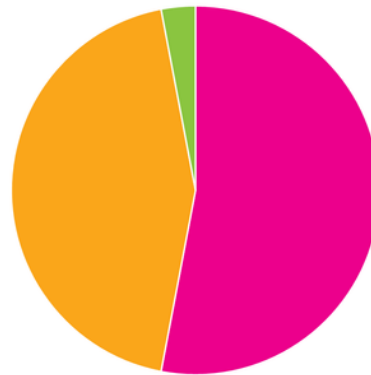
ONE OF THE 32 GLOBAL CHAPTERS  
RECEIVING 'OVERALL EXCELLENCE' AWARD



**115+**  
MEMBERS

**46%**  
SUPPLIERS

**2%**  
OTHER



**52%**  
PLANNERS



**\$37+ MILLION**  
ANNUAL CHAPTER  
MEMBER BUYING POWER

## WHAT PROPERTY TYPES DO MPI KENTUCKY BLUEGRASS PLANNER MEMBERS BOOK?

**61%**



DOWNTOWN &  
CONVENTION  
HOTELS

**45%**



CONVENTION &  
CONFERENCE  
CENTERS

**21%**



RESORTS

**19%**



SUBURBAN  
HOTELS

**19%**



CAMPUS,  
CRUISE  
& OTHER

**9%**



AIRPORT  
HOTELS



[info@kbcmpi.org](mailto:info@kbcmpi.org)



[www.kbcmpi.org](http://www.kbcmpi.org)



@mpikbc

# 2025 Strategic Partnership Benefits

Choose your sponsorship level and customize your package!

**All Partnership Levels Receive:** Company logo with hyperlink on the MPI Kentucky Bluegrass Chapter's website and logo on all event presentation slide decks.

**AND**, you get to customize your partnership benefits by selecting options from our Marketing and Event benefits. Based on your partnership level, the number of choices you can select will change.

**PLATINUM**

**5** Marketing Items *and* **4** Event Items

**\$5,000**

**DIAMOND**

**4** Marketing Items *and* **2** Event Items

**\$2,500**

**GOLD**

**2** Marketing Items *and* **1** Event Item

**\$1,000**

**SILVER**

**1** Marketing Item

**\$500**

*The above pricing is for Meeting Professional International members. Non-member pricing is available upon request.*

**Annual Partnerships can be split into 2 payments. First payment due at signing of Strategic Partnership Agreement and 2nd payment due on first day of the 7th month of partnership term.**



[info@mpikbc.org](mailto:info@mpikbc.org)



[www.kbcmpi.org](http://www.kbcmpi.org)



[@mpikbc](https://www.instagram.com/mpikbc)

# Marketing & Event Benefit Options

## MARKETING BENEFITS

*Choose from these items*

1. Two (2) social media posts that will be shared on all active MPI Kentucky Bluegrass social media channels (Facebook, Instagram, and LinkedIn) in the month(s) you choose.
2. One (1) banner ad in the MPI Kentucky Bluegrass quarterly newsletter in the quarter you choose.
3. One (1) advertisement on the MPI Kentucky Bluegrass website homepage (rotates with other paid advertising).
4. One (1) piece of collateral (provided by you) given to each attendee at an MPI Kentucky Bluegrass education/networking event of your choice.
5. One (1) dedicated e-blast to MPI Kentucky Bluegrass mailing list.
6. Listed as an event sponsor at the MPI Kentucky Bluegrass Global Meetings Industry Day event.
7. Provide a marketing video to incorporate into one (1) MPI Kentucky Bluegrass quarterly newsletter in the quarter you choose. (video cannot exceed two minutes)

## EVENT BENEFITS

*Choose from these items*

1. One (1) tabletop display at an MPI Kentucky Bluegrass education event.
2. One (1) complimentary registration to an MPI Kentucky Bluegrass educational event.
3. Two (2) minutes of podium time at an MPI Kentucky Bluegrass educational event.
4. One (1) tabletop display at an MPI Kentucky Bluegrass networking event.
5. One (1) complimentary registration to an MPI Kentucky Bluegrass networking event.

Partnership benefits are subject to MPI Kentucky Bluegrass approval to ensure alignment and avoid conflicts with other sponsors and partners. In addition, Kentucky Bluegrass Chapter reserves the right to refuse advertising, collateral, and other marketing submissions that do not reflect MPI Standards.

**For Strategic Partnership Benefit Questions,** contact chapter administrator at [info@kbcmpi.org](mailto:info@kbcmpi.org).



[info@mpikbc.org](mailto:info@mpikbc.org)



[www.kbcmpi.org](http://www.kbcmpi.org)



[@mpikbc](https://www.instagram.com/mpikbc)

# What's Next?

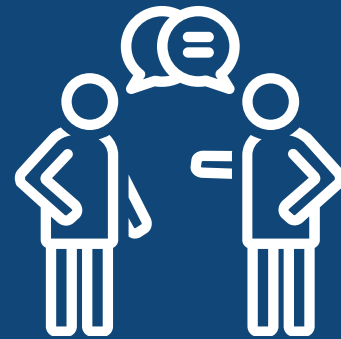


## *first*

Contact us by clicking [HERE](#) to complete the 2025 Strategic Partnership form.

## *second*

Let's set up a time to talk about our Strategic Partnership Opportunities and answer any questions you have.



## *third*

Make it official! We'll send you a Strategic Partnership Agreement. Once the dotted line is signed, the collaboration begins!



[info@mpikbc.org](mailto:info@mpikbc.org)



[www.kbcmpi.org](http://www.kbcmpi.org)



[@mpikbc](https://www.instagram.com/mpikbc)





*Thank you*

WE LOOK FORWARD TO  
PARTNERING WITH YOU!



[info@mpikbc.org](mailto:info@mpikbc.org)



[www.kbcmipi.org](http://www.kbcmipi.org)



[@mpikbc](https://www.instagram.com/mpikbc)